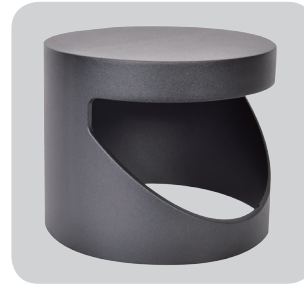


# DLW-LED-047



**A**

**B**



Head A



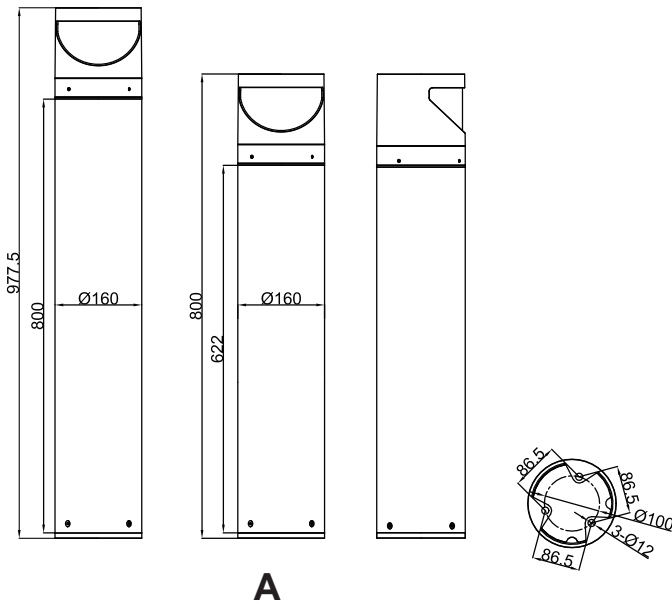
Head B



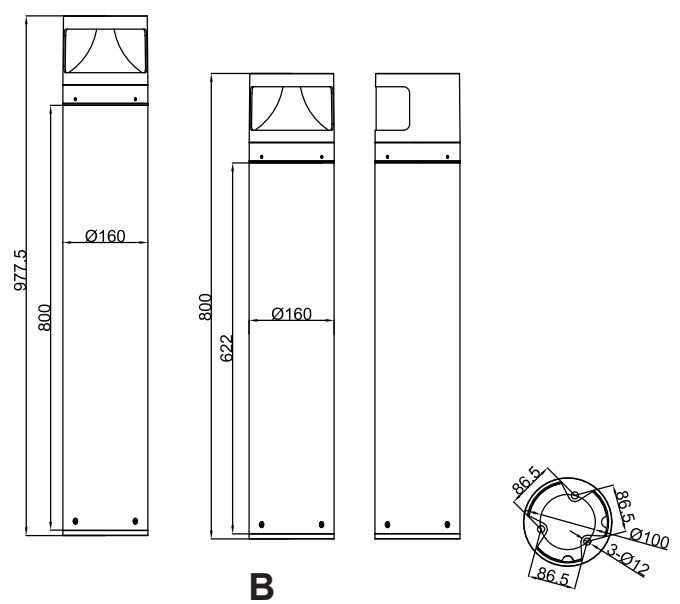
Die casting reflector  
for A shape



Die casting reflector  
for B shape



**A**



**B**

## Application:



Walkways



Parks and Gardens



Car parks



Prestigious

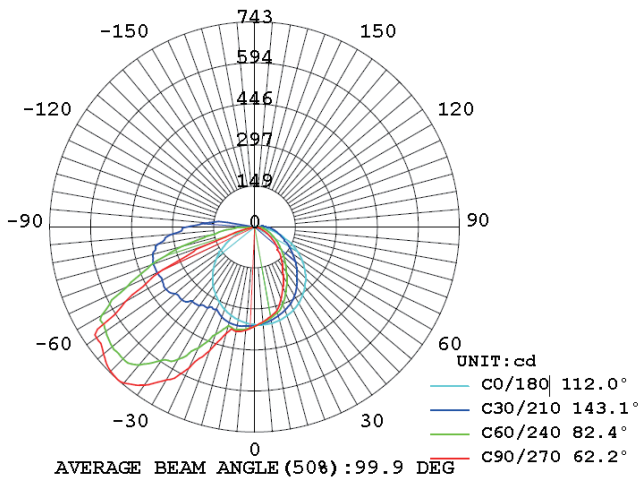


Retail



Amenity

## Distribution:



## Features:

- Main body is made of Die-casting aluminum alloy with Extruded aluminum alloy.
- The diffuser is clear anti-UV PMMA for high efficiency and vandal resistance.
- Lumileds 2835 led chip and Tridonic driver as regular, Sosen, Meanwell, Osram, driver option.
- Easy access to LED and driver via a removable head.
- 2700-6500K color temperature option.
- Tamper proof fixings for increased vandal resistance.
- Anti-UV electrostatic powder spraying, regular color: Black, Silver, RAL7043, RAL7016
- IP65 rating water and rust proof protection.
- IK08 rating housing protection.
- Warranty is 3-5 years.

## Specification:

Item No.	LED	Lumens	Wattage	CCT	CRI
DLW-LED-047A-10W	Lumileds 2835	845LM	10W	2700-6500K	Ra≥80
DLW-LED-047A-14W	Lumileds 2835	1140LM	14W	2700-6500K	Ra≥80
DLW-LED-047A-20W	Lumileds 2835	1535LM	20W	2700-6500K	Ra≥80
DLW-LED-047A-24W	Lumileds 2835	1805LM	24W	2700-6500K	Ra≥80
DLW-LED-047B-10W	Lumileds 2835	721LM	10W	2700-6500K	Ra≥80
DLW-LED-047B-14W	Lumileds 2835	967LM	14W	2700-6500K	Ra≥80
DLW-LED-047B-20W	Lumileds 2835	1330LM	20W	2700-6500K	Ra≥80
DLW-LED-047B-24W	Lumileds 2835	1500LM	24W	2700-6500K	Ra≥80